

Sycamore House

Welcome to the Sycamore House!

The fairies that live here want to teach you all about their favorite tree—the American sycamore.

Fairies may be small, but this tree certainly isn't. The American sycamore is one of the largest trees native to the eastern United States. They grow as tall as 75–100 feet tall with a trunk diameter of 6–8 feet. Record-breaking sycamores have grown as large as 174 feet tall and 16 feet in diameter. (You may recall the tulip tree can grow as tall as the sycamore, but they generally aren't as big around.)

Not only is the sycamore tree massive, but it can also live a very long time. These trees can live to be at least 200 years old, and many are likely as old as 500–600 years.

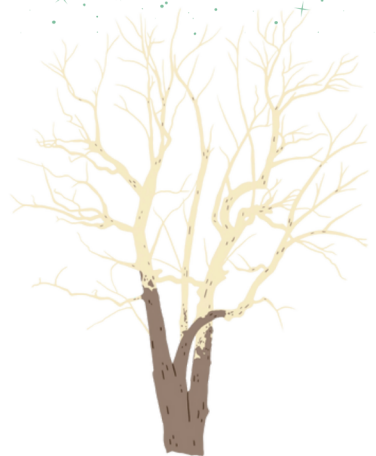
The sycamore is another tree that was used to create dugout canoes, and its bark has medicinal properties.



White caps

Sycamore trees can be very easy to spot and identify, especially in the wintertime. You simply have to look for the white tree tops.

As a tree grows, the bark of the tree has to stretch or split to make room for the trunk. But sycamore bark is rigid, and as the trunk grows, it sheds large pieces of bark.

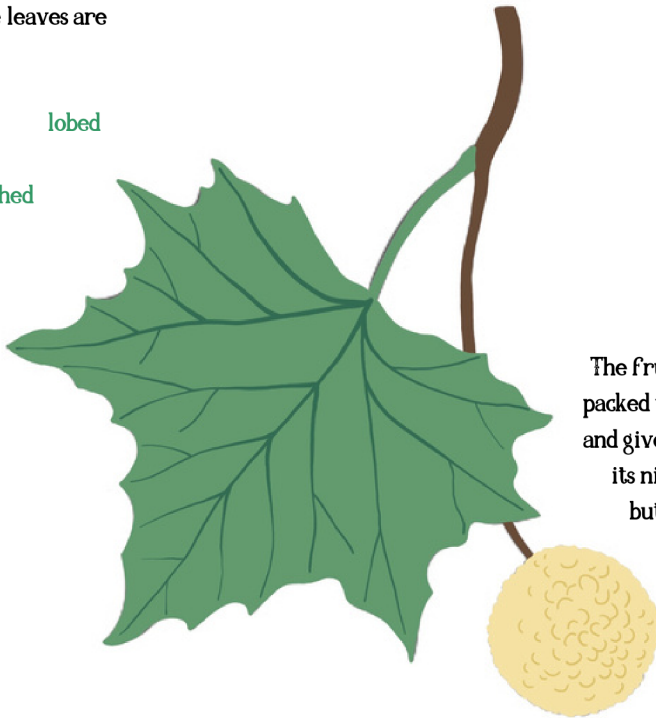


American Sycamore

Platanus occidentalis

The American sycamore is a large, deciduous tree that may grow 75–100 feet tall. The dark outer-layer of bark peels to expose lighter inner layers giving the tree a mottled appearance.

The leaves are
simple
lobed
toothed



The fruit ball is densely packed with fluffy seeds, and gives this tree one of its nicknames—the buttonball tree.

Can you find the fairies' favorite American sycamore tree? Head to number 7 on the map, and look for the mottled bark and white tree top. You may also notice the maple-like leaves and buttonball fruit.

